

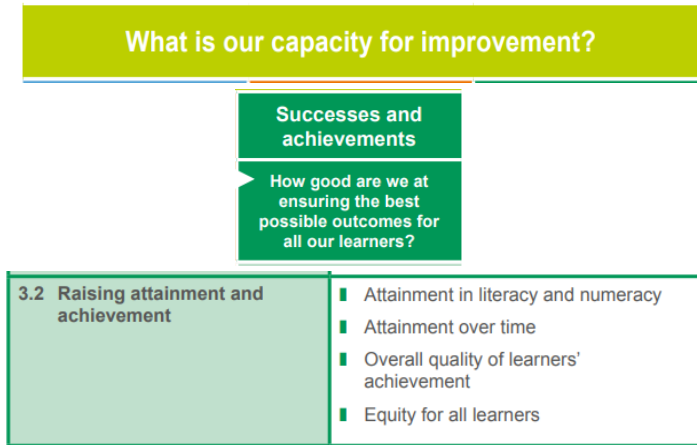


Numeracy Working Group

Priority 3

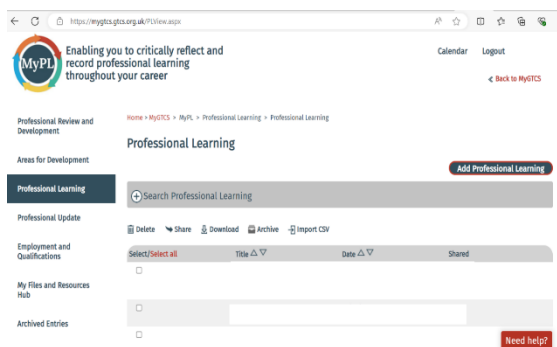
To improve our approach to Learning, Teaching, and Assessment (LTA)

What is our capacity for improvement?		
Leadership and management	Learning provision	Successes and achievements
How good is our leadership and approach to improvement?	How good is the quality of the care and education we offer?	How good are we at ensuring the best possible outcomes for all our learners?
1.1 Self-evaluation for self-improvement 1.2 Leadership of learning 1.3 Leadership of change 1.4 Leadership and management of staff 1.5 Management of resources to promote equity	2.1 Safeguarding and child protection 2.2 Curriculum 2.3 Learning, teaching and assessment 2.4 Personalised support 2.5 Family learning 2.6 Transitions 2.7 Partnerships	3.1 Ensuring wellbeing, equality and inclusion 3.2 Raising attainment and achievement 3.3 Increasing creativity and employability



At Banchory Academy we participate in individual and collective professional learning opportunities to allow us to ensure the highest quality education and experience for all our pupils.

Our commitment to Professional Learning & GTCS standards



Standard for Career-Long Professional Learning
Being a teacher in Scotland
1.1 Professional Values <ul style="list-style-type: none"> ■ Social Justice and Sustainability ■ Trust and respect ■ Integrity
1.2 Professional commitment
1.3 Standard for Career-Long Professional Learning
Professional Knowledge and Understanding
2.1 Curriculum and Pedagogy <ul style="list-style-type: none"> ■ Have a depth of knowledge and understanding of Pedagogical Theories and Professional Practice ■ Have a depth of knowledge and understanding of Research and Engagement in Practitioner Enquiry ■ Have a depth of knowledge and understanding of Curriculum Design ■ Have a depth of knowledge and understanding of Planning for Assessment, Teaching and Learning
2.2 Professional Responsibilities <ul style="list-style-type: none"> ■ Have a depth of knowledge and understanding of Education Systems ■ Have a depth of knowledge and understanding of Learning Communities
Professional Skills and Abilities
3.1 Curriculum and Pedagogy <ul style="list-style-type: none"> ■ Plan effectively to meet learners' needs ■ Effectively utilise pedagogical approaches and resources ■ Effectively utilise partnerships for learning and wellbeing ■ Effectively employ assessment, recording and reporting as an integral part of the teaching process to support and enhance learning
3.2 The Learning Context <ul style="list-style-type: none"> ■ Effectively organise and manage learning ■ Effectively utilise learner participation ■ Build positive relationships for learning
3.3 Professional Learning <ul style="list-style-type: none"> ■ Engage critically with literature, research and policy ■ Engage in reflective practice to develop and advance career-long professional learning and expertise

Priorities of the group 24/25

- 1) Finalise, launch and then evaluate Numeracy Booklet (over the course of the whole session)
- 2) Start to embed benchmarks in booklet
- 3) Work with cluster on transition

Programme in school – Group meetings to be held on a **Tuesday lunchtimes in Room 13 (12.45 – 13.15)**

Blue signifies In-service LTA input.

- Tue 24th September – Welcome 😊 – Recap from last year that has led to the 3 priorities for this session. Agree dates for future meetings.
- Tue 28th October – Agree subgroups and specific targets. Discuss whether a brief slot at November In-service is needed to launch booklet and posters.
- Thu 14th November In-service Day – LTA slot?
- Tue 26th November – Group evaluation of progress so far and agree next steps.
- Tuesday 21st January – Discussion & planning for slot at IN-SERVICE in February if required or is a staff meeting and feedback form enough?
- February In – service day – Numeracy slot required?
- Wednesday 23rd April – Focus on final areas that require coverage in term 4 – best use of study leave etc?
- Wednesday 4th June – Final update from sub-groups on progress - first of two evaluation meetings - Focus on priorities and evaluate the progress of the year – What's been achieved this year and its impact on staff and pupils. What needs to be carried over and worked on next session? What are the new priorities for session 25/26? Finalise priorities for session 25/26...and summer cakes! 😊