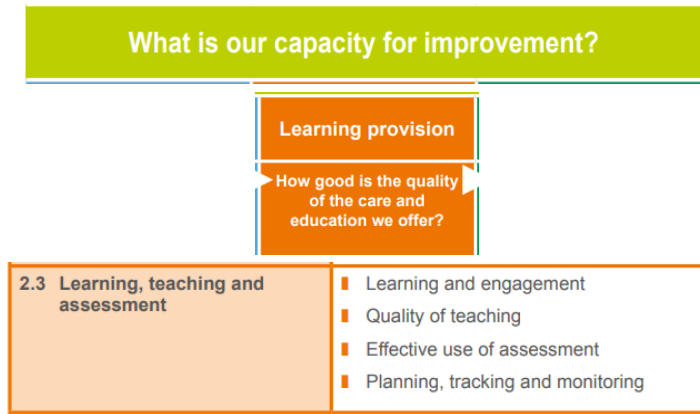




Learning, Teaching & Assessment Working Group

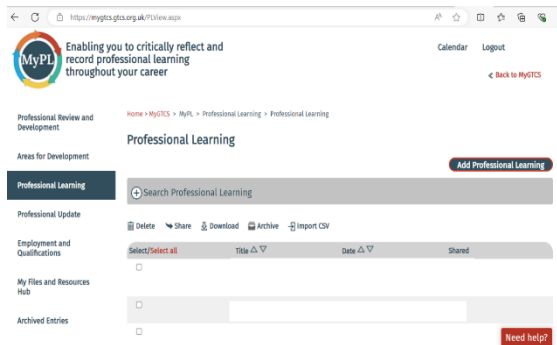
Priority 3
To improve our approach to Learning, Teaching, and Assessment (LTA)

What is our capacity for improvement?		
Leadership and management	Learning provision	Successes and achievements
How good is our leadership and approach to improvement?	How good is the quality of the care and education we offer?	How good are we at ensuring the best possible outcomes for all our learners?
1.1 Self-evaluation for self-improvement 1.2 Leadership of learning 1.3 Leadership of change 1.4 Leadership and management of staff 1.5 Management of resources to promote equity	2.1 Safeguarding and child protection 2.2 Curriculum 2.3 Learning, teaching and assessment 2.4 Personalised support 2.5 Family learning 2.6 Transitions 2.7 Partnerships	3.1 Ensuring wellbeing, equality and inclusion 3.2 Raising attainment and achievement 3.3 Increasing creativity and employability



At Banchory Academy we participate in individual and collective professional learning opportunities to allow us to ensure the highest quality education and experience for all our pupils.

Our commitment to Professional Learning & GTCS standards



Standard for Career-Long Professional Learning
Being a teacher in Scotland
1.1 Professional Values ■ Social Justice and Sustainability ■ Trust and respect ■ Integrity
1.2 Professional commitment
1.3 Standard for Career-Long Professional Learning
Professional Knowledge and Understanding
2.1 Curriculum and Pedagogy ■ Have a depth of knowledge and understanding of Pedagogical Theories and Professional Practice ■ Have a depth of knowledge and understanding of Research and Engagement in Practitioner Enquiry ■ Have a depth of knowledge and understanding of Curriculum Design ■ Have a depth of knowledge and understanding of Planning for Assessment, Teaching and Learning
2.2 Professional Responsibilities ■ Have a depth of knowledge and understanding of Education Systems ■ Have a depth of knowledge and understanding of Learning Communities
Professional Skills and Abilities
3.1 Curriculum and Pedagogy ■ Plan effectively to meet learners' needs ■ Effectively utilise pedagogical approaches and resources ■ Effectively utilise partnerships for learning and wellbeing ■ Effectively employ assessment, recording and reporting as an integral part of the teaching process to support and enhance learning
3.2 The Learning Context ■ Effectively organise and manage learning ■ Effectively utilise learner participation ■ Build positive relationships for learning
3.3 Professional Learning ■ Engage critically with literature, research and policy ■ Engage in reflective practice to develop and advance career-long professional learning and expertise

Priorities of the group 24/25

1) Feedback

- Embed Do, Improve, Move (focus in BGE)
- Classroom observations (focus on BGE)

2) Learning Statement

- Continue staff engagement.
- Pupil engagement

3) What Learning at Banchory Looks like

- How observations & use of learning statement thread together LTA.

Programme in school – Group meetings to be held on a **Tuesday or Wednesday lunchtime in Room 21 (12.45 – 13.15)**

Meetings in green are extra meetings and blue signifies In-service LTA input.

- Tue 24th September – Welcome 😊 – Recap from last year that has led to the 3 priorities for this session. Staff allocation to subgroups and how we take this forward.
- Wed 2nd October – Continue from previous week meeting to plan the year ahead.
- Tue 28th October - Work through and move forward with priorities. Planning & discussion for IN-SERVICE in November – focus on CIRCLE – Structures & Routines - input needed from LTA group on the Learning Statement (staff knowledge of and roll out of pupil version...feedback from pupils on how it gives clear understanding of learning expectations etc)
- Wed 6th November – Finalise arrangements for IN-SERVICE.
- Thu 14th November In-service Day – LTA slot
- Tue 26th November – Group evaluation of IN-SERVICE day slot. How we move forward...
- Wed 11th December – Work through and move forward with priorities. Sub-groups to give brief update on progress/actions. Round up of terms 1 & 2 and Christmas goodies 😊
- Tuesday 21st January – Discussion & planning for slot at IN-SERVICE in February – ‘The Banchory Lesson’ How we engage staff in this concept. Activities planned.
- February In – service day – LTA slot
- Wednesday 5th March – Group evaluation of IN-SERVICE day slot. How we move forward...
- Tuesday 25th March – Work through and move forward with priorities. Sub-groups to give brief update on progress/actions. Round up or term 3 and Easter goodies 😊
- Wednesday 23rd April – Focus on final areas that require coverage in term 4 – best use of study leave etc?
- Tuesday 13th May – Final update from sub-groups on progress - first of two evaluation meetings - Focus on priorities and evaluate the progress of the year – What’s been achieved this year and its impact on staff and pupils. What needs to be carried over and worked on next session? What are the new priorities for session 25/26?
- Wednesday 4th June – Final evaluation meeting (see above) Finalise priorities for session 25/26...and summer cakes! 😊